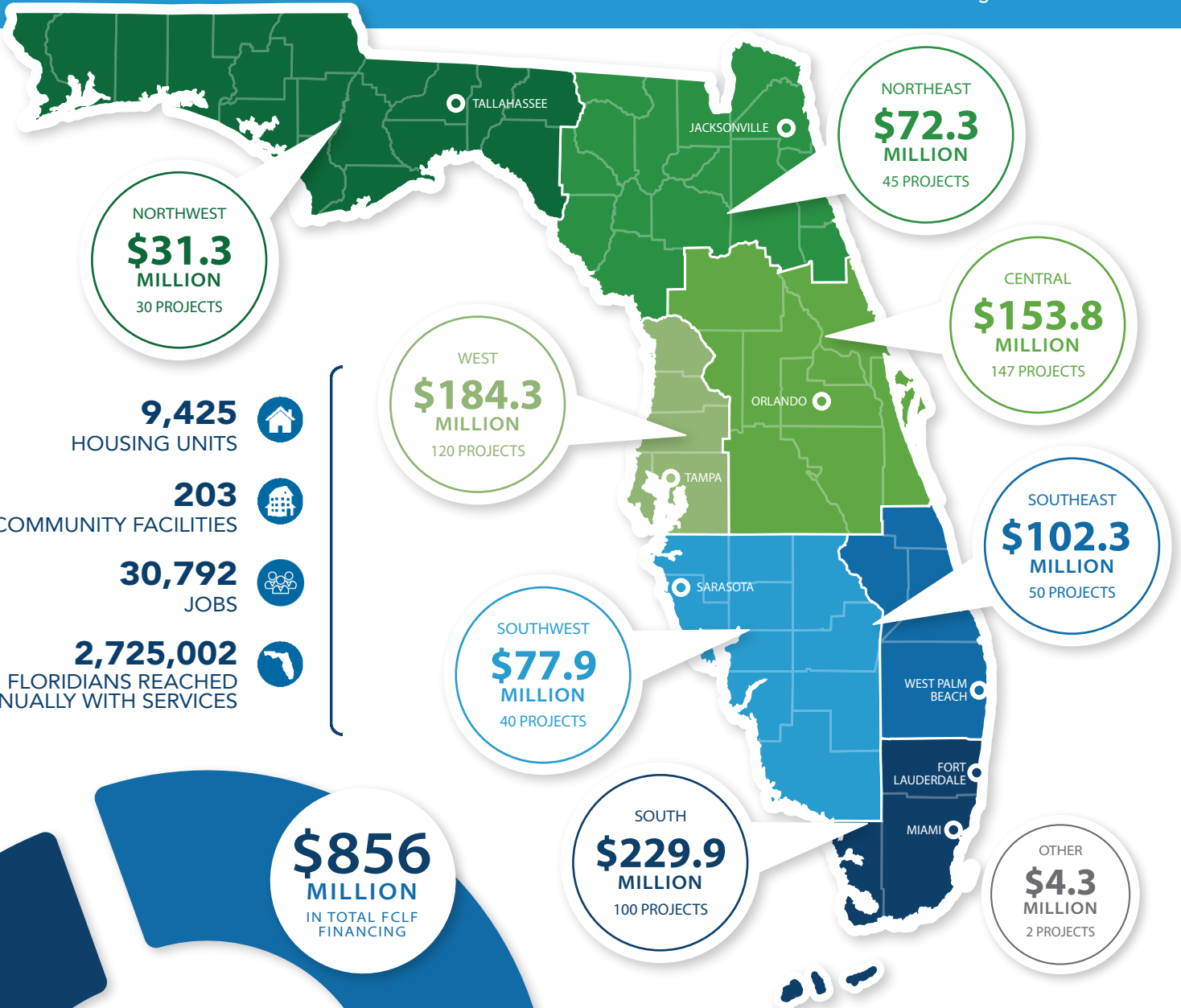


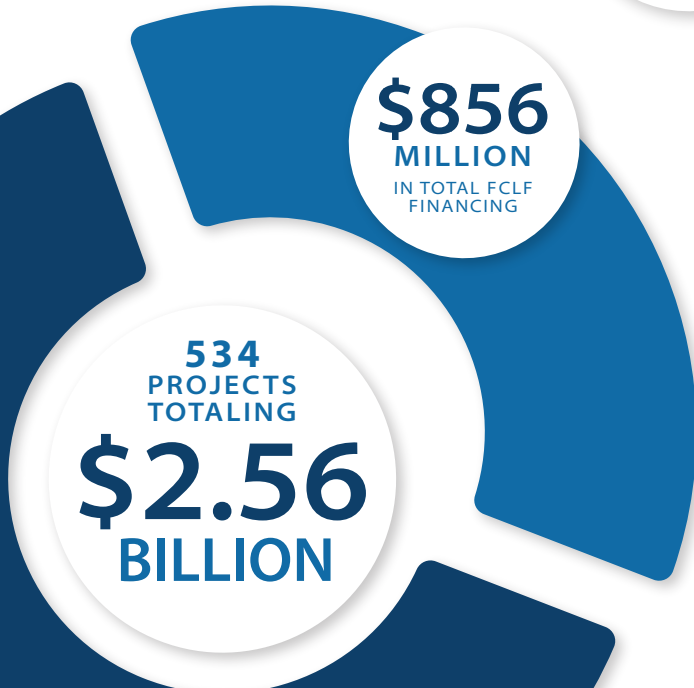
OUR IMPACT

12/31/2025

www.FCLF.org • 407 246 0846



- 9,425** HOUSING UNITS
- 203** COMMUNITY FACILITIES
- 30,792** JOBS
- 2,725,002** FLORIDIANS REACHED ANNUALLY WITH SERVICES



TOTAL IMPACT

\$377,697,434	CDFI Lending
\$478,383,181	New Markets Tax Credit Financing
\$856,080,615	Total Cumulative FCLF
\$1,708,716,280	Other Funding Sources
\$2,564,796,895	FCLF Total Impact

HOW WE IMPACT LIVES

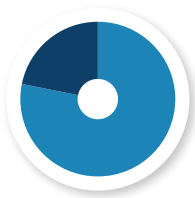


9,425 HOUSING UNITS



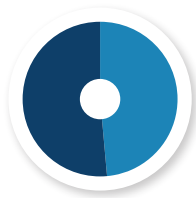
Housing Types

- Single Family (2,307)
- Multifamily (5,427)
- Supportive & Special Needs (1,691)



Own vs Rent

- Ownership (1,912)
- Rental (7,513)



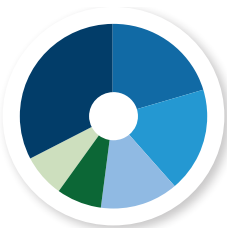
New vs Rehab

- New Construction (5,083)
- Rehab (4,342)



203 FACILITIES

TOTALING 3.69 MILLION SQ FT



Facility Type

- Homeless & Special Needs (67)
- Education & Youth (41)
- Healthcare & Behavioral Healthcare (36)
- Commercial & Retail (24)
- Nonprofit Community Services (19)
- Food Access (16)



30,792 JOBS

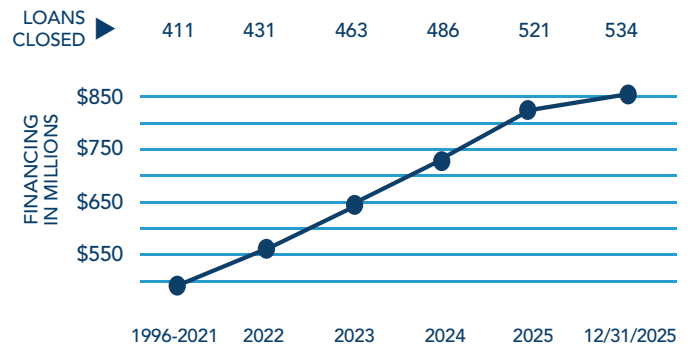
CREATED OR RETAINED AT PROJECTS FINANCED BY FCLF



Employment Type

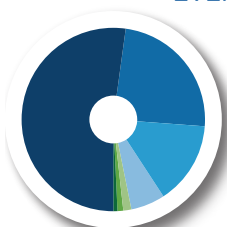
- Permanent (5,703)
- Temporary / Construction (25,089)

CUMULATIVE FINANCING



2.73 million FLORIDIANS

RECEIVE ESSENTIAL SERVICES EVERY YEAR



Type of Lending

- Food Access (1,499,824)
- Nonprofit Community Services (558,375)
- Commercial & Retail (320,443)
- Healthcare & Behavioral Health (166,994)
- Education & Youth (113,550)
- Homeless & Special Needs (36,719)
- Housing (29,098)

OUR CORE PURPOSE

FCLF exists to maximize opportunities for people and places outside of the economic mainstream.

OUR VISION

Opportunity and dignity exist for every person and community in Florida.

OUR MISSION

Our expertise and capital make projects successful and help organizations improve lives and communities.